

## THE INFLUENCE OF CHINESE MING-STYLE FURNITURE ON MODERN ENVIRONMENT DESIGN

**Xu Yun**

VSU named after P.M. Masherov, Vitebsk, Belarus

Keywords: hardwood furniture, material selection, modeling, craft, simplicity and cultural connotation.

Ming-style furniture is the pinnacle of traditional Chinese furniture, having absorbed the essence of the furniture of all generations over the centuries and formed a traditional furniture with great national characteristics. The beautiful and generous shapes, the careful choice of materials, the proportionate proportions, the concise contours and the excellent craftsmanship of Ming-style furniture reflect a concise and simple artistic style, full of the skill of the craftsmen and infused with the aesthetic sensibilities of the ancient Chinese literati. Ming-style furniture is of high artistic value in terms of workmanship, materials, structure and form, and has had a great influence on later generations.

**Material and methods.** The material for this study was the objects of furniture designed by modern designers and made in Ming-style and presented at numerous design and modern furniture exhibitions in various cities of China. We also analyzed objects of Ming-style furniture presented in the catalogs of companies developing interior design and auction house furniture. The following methods were used in the study: historical and stylistic analysis, comparative.

**Findings and their discussion.** Overview of Ming-style furniture.

Ming-style furniture was produced in China from the mid-Ming Dynasty to the early Qing Dynasty (15th-17th centuries AD), using Scentedrosewood (refer with: Figure 1-1), Phoebe zhennan wood (refer with: Figure 1-2), Red sandalwood (refer with: Figure 1-3), Millettia Laurentii wood, etc. As the main materials. It was mainly made during the Ming Dynasty, so it is called 'Ming-style'.



1-1 Scentedrosewood



1-2 Phoebe zhennan wood



1-3 Red sandalwood

The selection of materials for Ming-style furniture was careful: The brilliant colours of Scentedrosewood, with yellow and brown, its fine and beautiful grain and the characteristic scent of the wood; Phoebe zhennan wood is a precious wood unique to China, It is orange yellow in color, with a faint aroma of camphor wood, the grain is clear and richly varied, like many golden lines etched into the wood, which glows beautifully in the sunlight, beautiful to the extreme. Red sandalwood is an particularly hard and heavy wood, with a deep purple-black colour, after polishing, the surface can show a satin-like luster. The craftsmen chose these woods because they are strong and durable, easy to preserve, on the other hand, they all have a beautiful natural grain, fragrant wood smell.



2-1 Official hat chair



2-2 Bogu Shelf



2-3 lap chair



2-4 long table

The unique shape of Ming-style furniture: The designers of furniture are mostly people with a lot of knowledge and very elegant gentlemen. After they design the furniture patterns, they are then handed over to the woodworkers with good craftsmanship, so the shape of the furniture pursues the elements of point, line, surface and body collocation, and the structure is scientific and reasonable, in line with the principle of ergonomics(refer with: Figure 2-1); The exterior outline of the furniture has no complicated decoration, and uses lines to form rich variations, giving users a strong sense of curve beauty(refer with: Figure 2-2); the panel decoration mainly reflects the unique style through the texture of the wood itself, carved patterns with implied meanings(refer with: Figure 2-3), inlays and auxiliary components(refer with: Figure 2-4), etc.

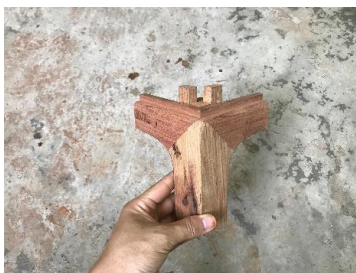


Figure 3-1 Sunmao structure



Figure 3-2 Zanbian method

The exquisite craftsmanship of Ming-style furniture: The process of furniture is mainly adopted mortise and tenon joint structure [in Chinese it is Sunmao structure (refer with: Figure3-1)] and Insert a piece of wood into the rim with grooves on the inside [in Chinese it is Zanbian method(refer with: Figure3-2)]. Using these processes to make full use of the characteristics of wood, many ingenious ways of joining have been discovered. They also reduce the use of nails, reducing damage to the wood and extending the life of the furniture.

#### The Value Reflection of Ming-style Furniture to Modern Environmental Design

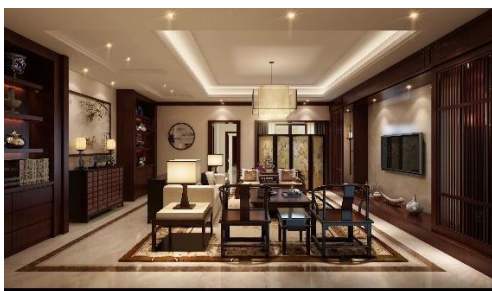


Figure 4-1 New Chinese style



Figure 4-2 Furniture with textures

The beauty of Ming-style furniture is reflected in the simplicity of its shape and the implication of its decoration. Ming-style furniture as a whole shows that the exterior is curvilinear and the interior is square, which originates from the traditional concept of ancient China that the sky is round and the earth is square. The shape is in keeping with the beauty of nature, looking regular but flexible, a shape that is in keeping with the minimalist philosophy of modern environmental design (refer with: Figure 4-1). In terms of the decoration of the styling, Ming-style furniture often uses textures that make animals and plants abstract (refer with: Figure 4-2), making the person feel like they are living in nature, abstract elements used in the decoration of Ming-style furniture can also be added to modern environmental design, so that people can decode nature in their viewing and experience natural feelings in their use.

With the progress of society, people's pursuit of life is no longer limited to functional satisfaction, but has begun to pursue the psychological needs of comfort and a sense of belonging. The unique style of Ming-style furniture, which uses pure natural materials and simple styles, is the same as the aesthetic tastes of modern people, making Ming-style furniture of great economic value in the design of modern environments. Its profound cultural connotations and the auspicious and blessed symbolism of its decorative motifs are very popular with modern people, and to a large extent meet their psychological needs.

**Conclusion.** Each piece of Ming-style furniture was made with the greatest of attention to detail, and the craftsmen never simply designed it as a household item, but rather crafted it as a work of art, which is the reason for its high artistic value.

The choice of materials, the shaping of forms, the structure and decoration of Ming-style furniture set a standard for modern environmental design, providing reference and meaning in many ways. Ming-style furniture embodies the concept of respecting nature and people-oriented thinking, and is also used in contemporary environmental design. The aesthetic and cultural connotation of Ming-style furniture is more in line with the spiritual needs of modern people.

I think an excellent modern environment design should reflect the modern design and also have the feelings of traditional culture. Ming-style furniture is a classic of traditional Chinese design, it exudes the charm, culture and connotation of influence is very long, interpreting its language, which expresses noble elegance and classics, with modern design, which is currently respected by modern people's environmental design style, but also is the profound influence of Ming-style furniture to modern people, It allows people to enjoy modern life while perceiving the charm of the essence of ancient culture.

1. Study on Cultural & Creative Design Based on the Extraction of Decorative Elements of Ming-style Furniture / Ed. by Ge Hui. – Furniture and interior decoration. – 2022. – № 7. – 30 p.

2. Research on the artistic characteristics of Ming-style furniture design / Ed. by Shi Shiqi, Liu Wenjia, Lv Jiufang. – Fine Arts Education. – 2022. – 36 p.

3. Brief Analysis of the Technological Characteristics and Value of Ming-Style Furniture / Ed. by Zhang Jingguang. – Art design, 2022. – № 5. – 85 p.